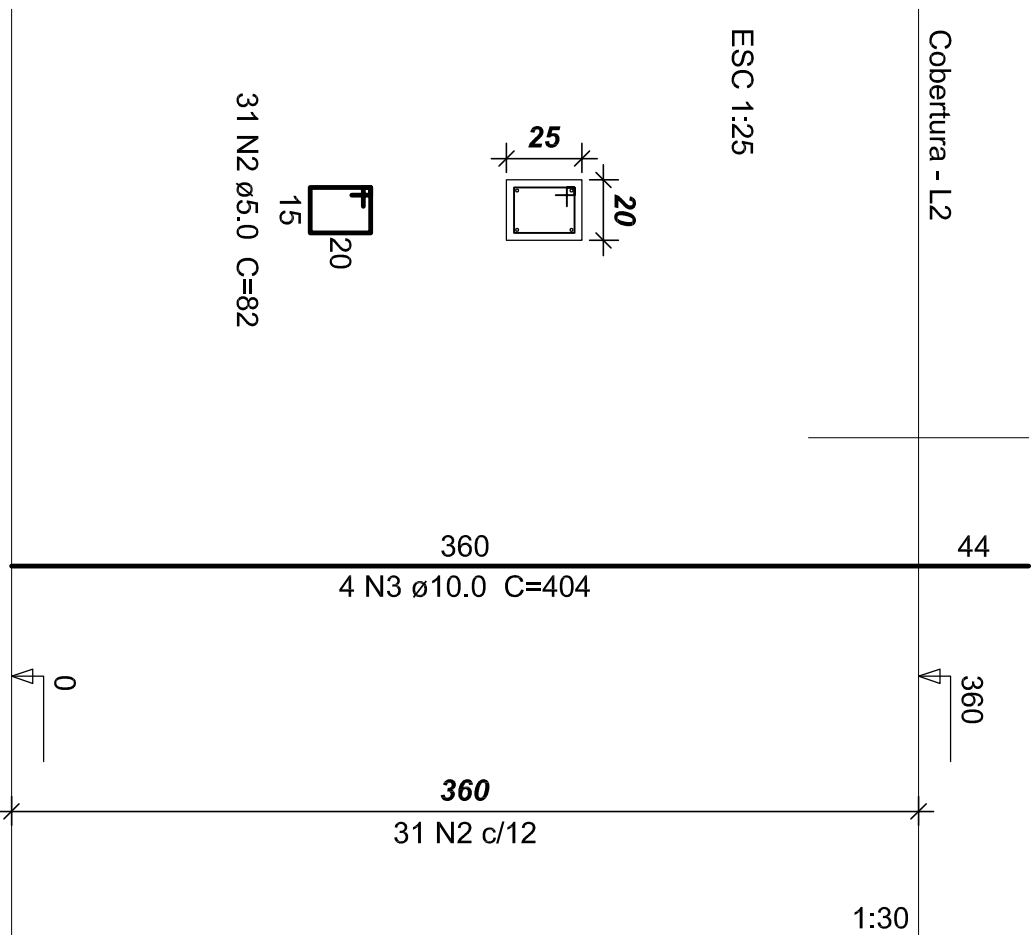
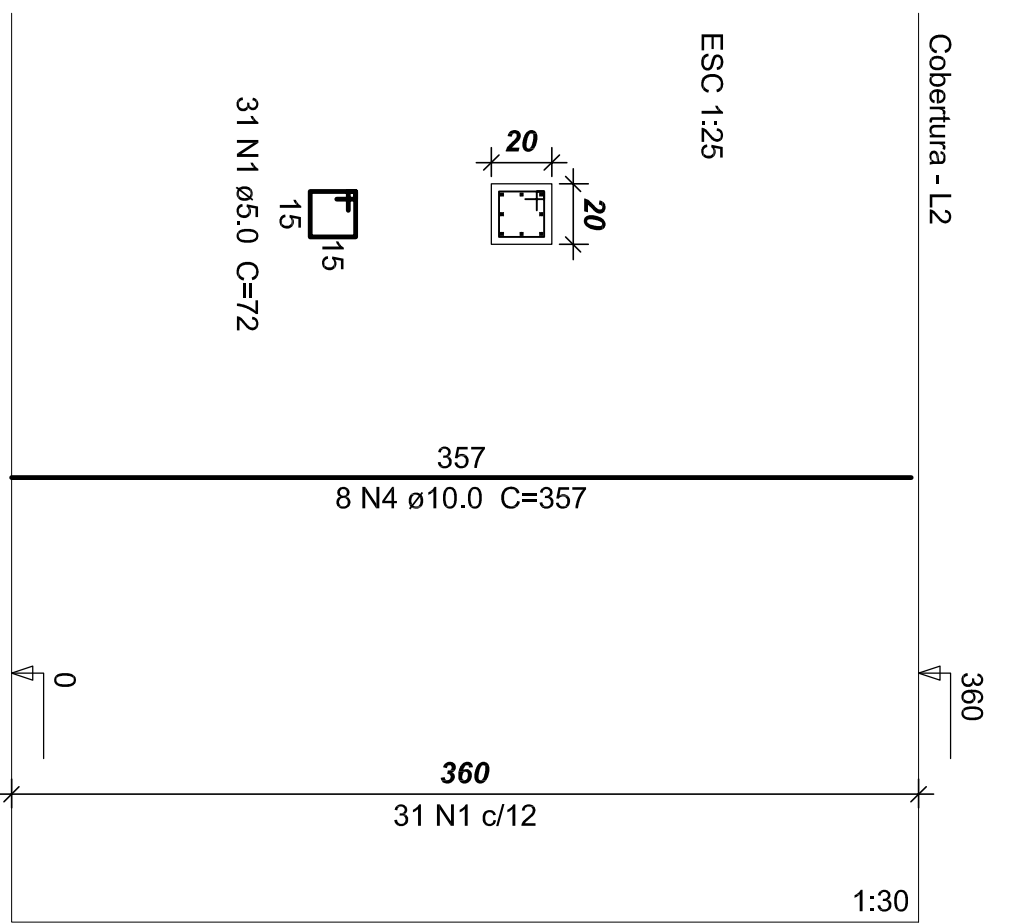
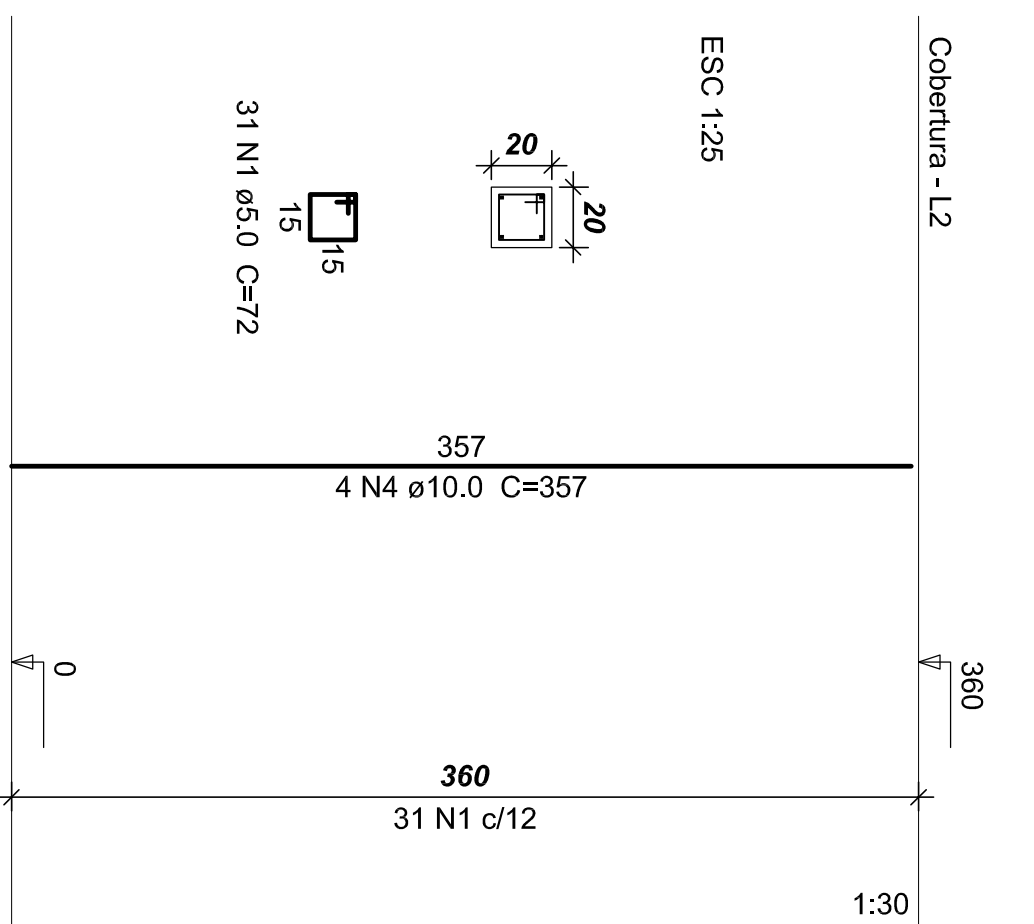
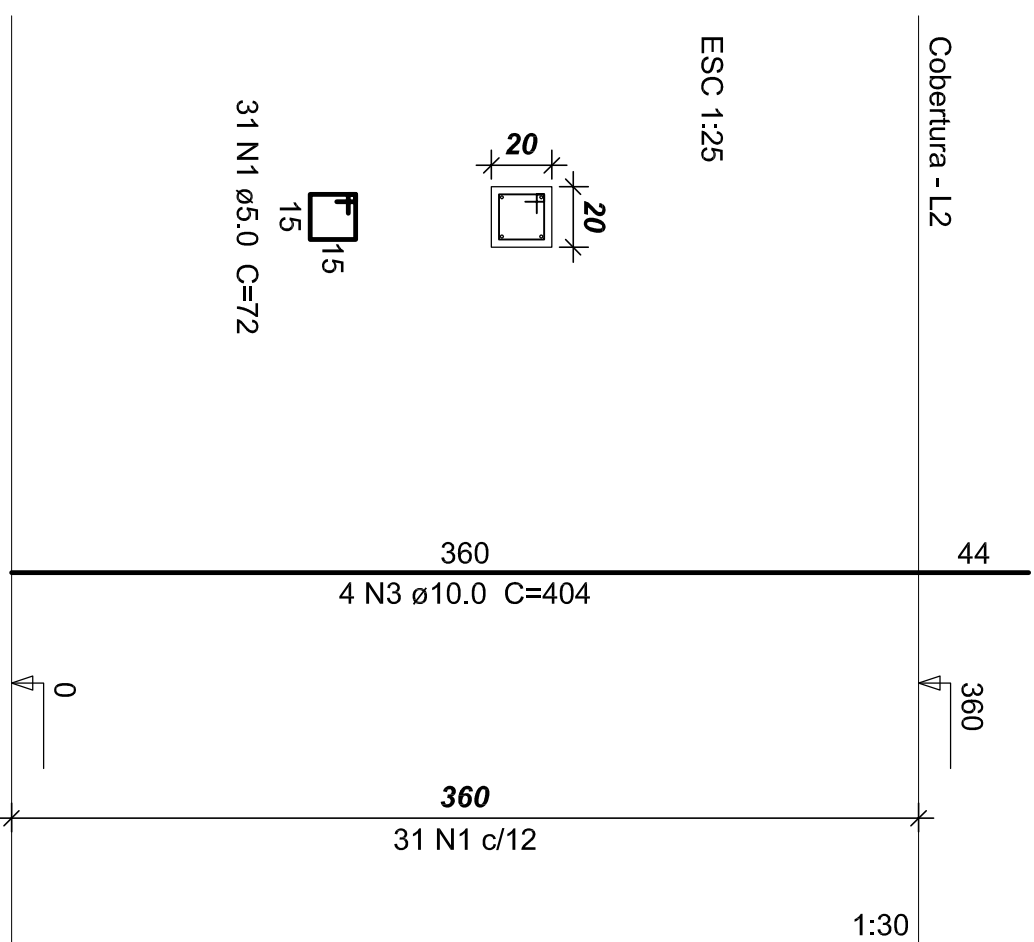


$$P_1 = P_2 = P_3 = P_4 = P_5 \\ = P_6 = P_{12} = P_{16}$$

P13=P14=P15

P18

P19=P20=P21=P22=P24



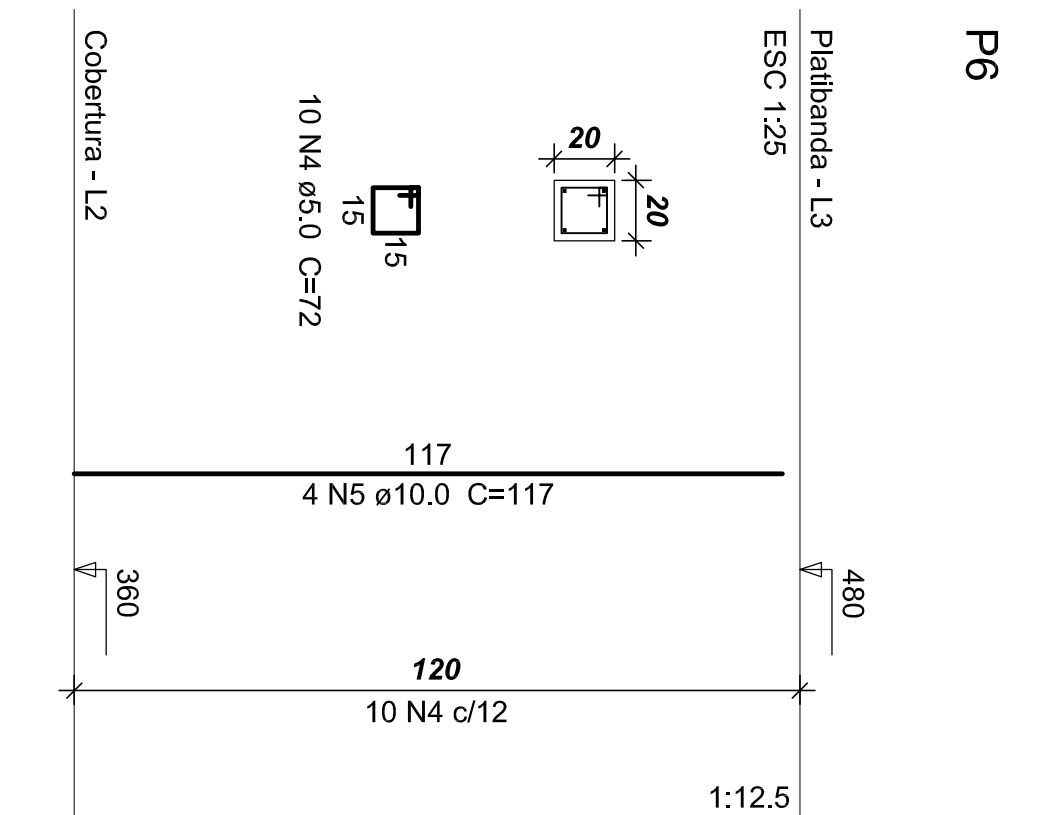
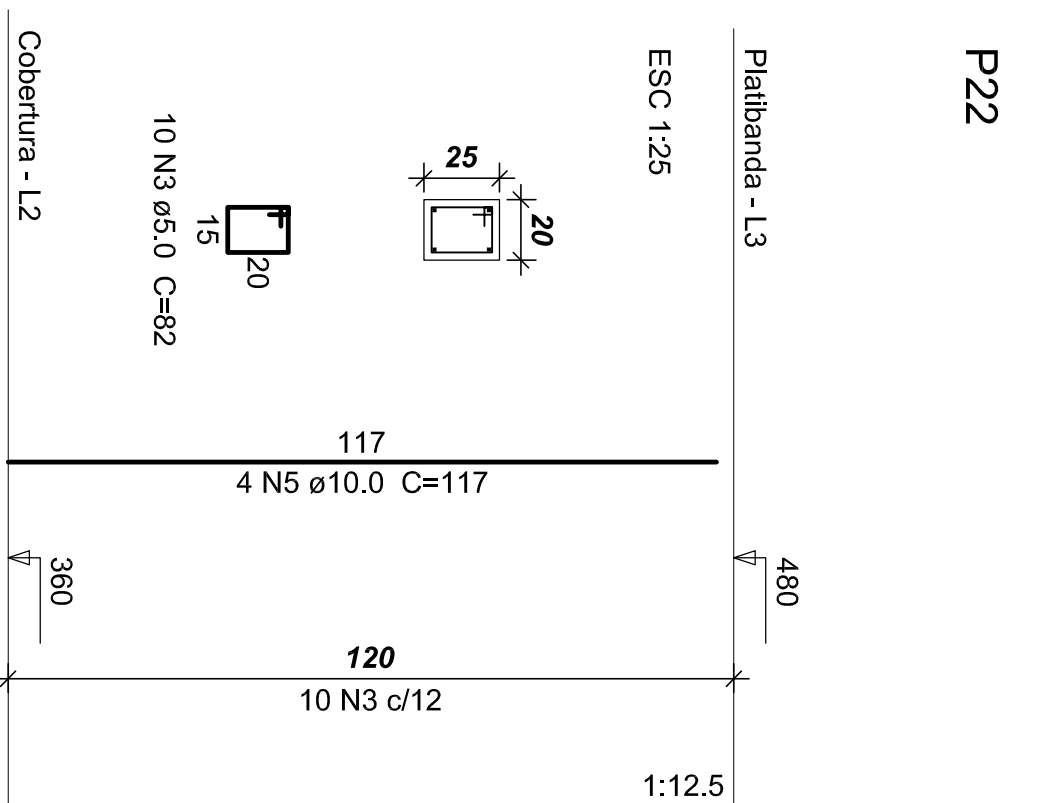
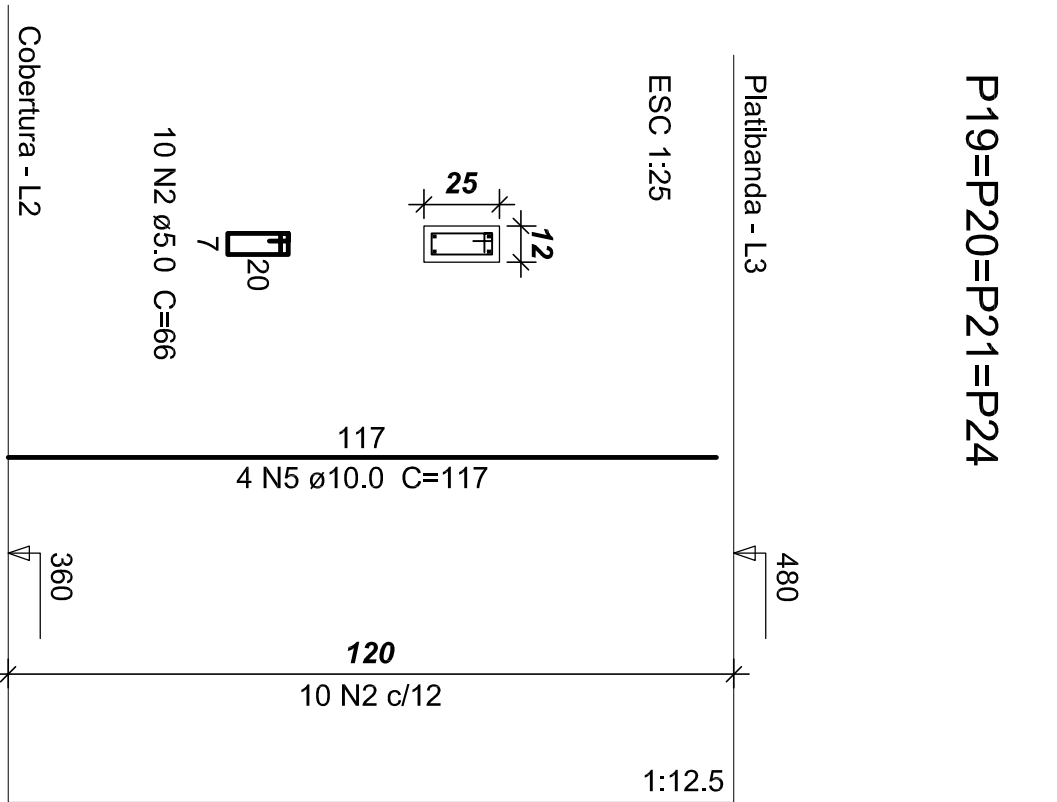
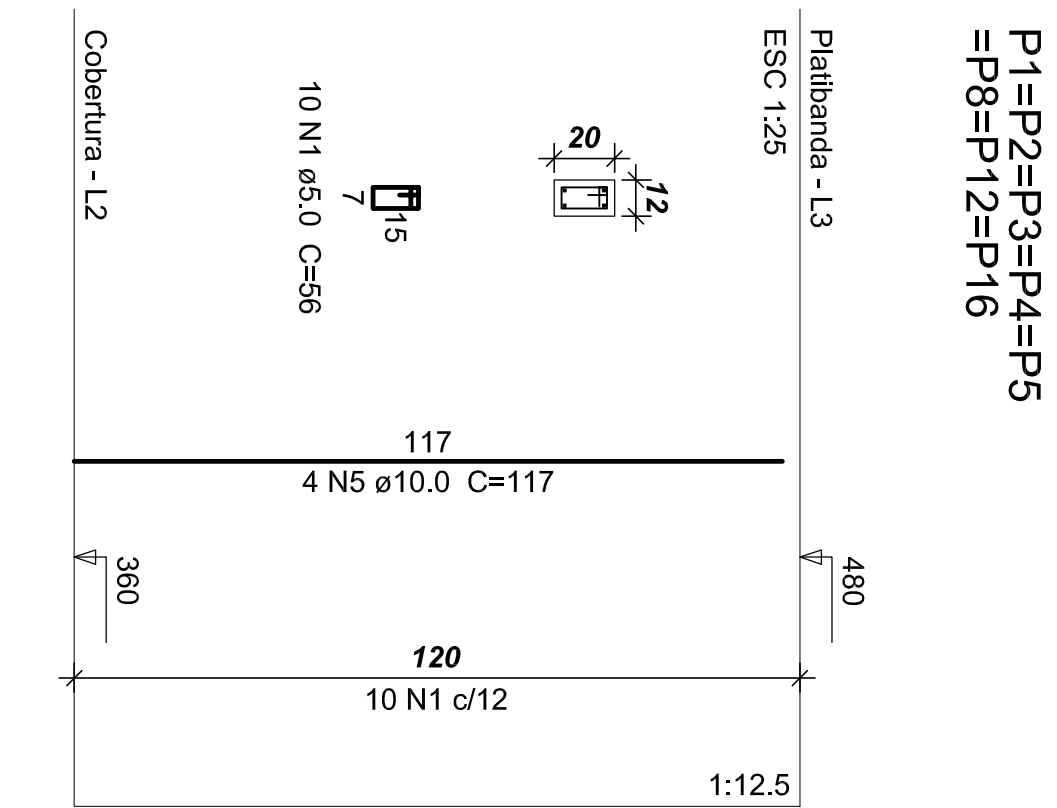
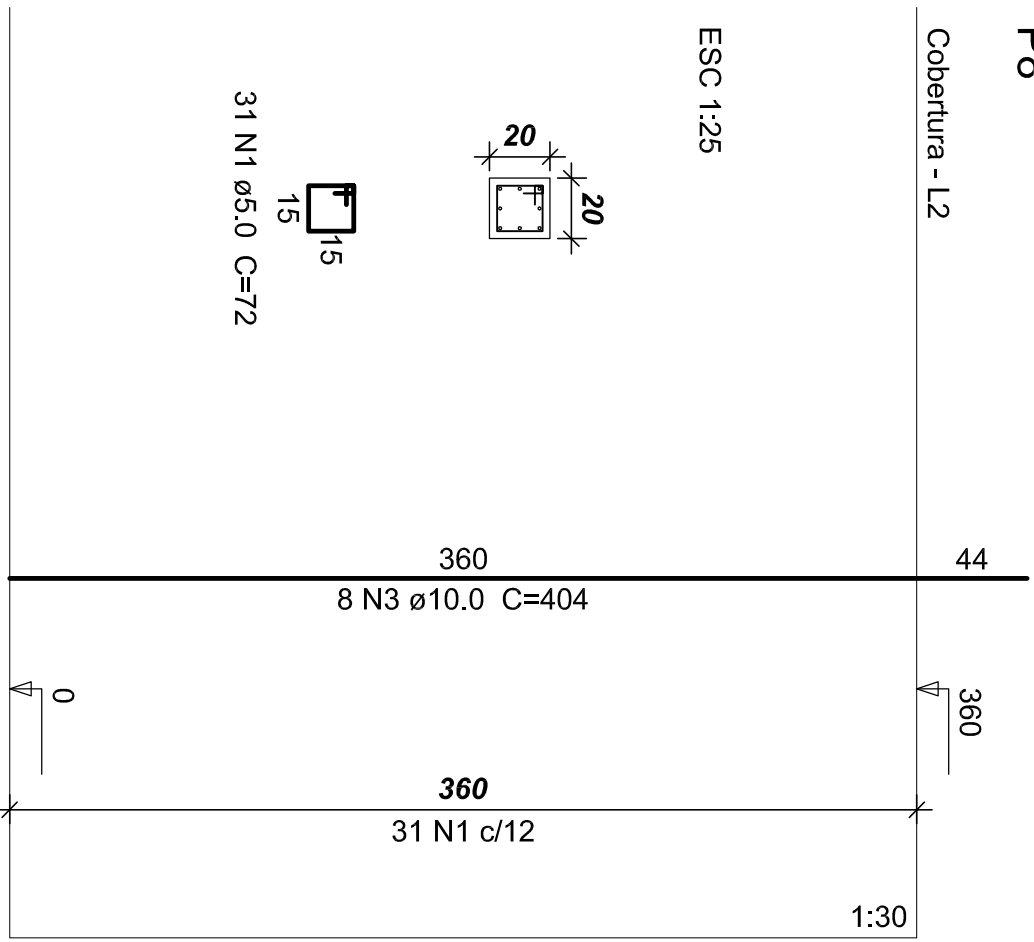
ACO	N	DIAM	Q	UNIT (cm)	C.TOTAL (cm)
CA60	1	5,0	403	72	29016
	2	5,0	155	82	12710
CA50	3	10,0	60	404	24240
	4	10,0	20	357	7140

Relação do Aço Pilares no Pav. Térreo

AÇO	DIAM	C.TOTAL (m)	PESO (kg)
CA50	10.0	313.8	193.5
CA60	5.0	417.3	64.3
PESO TOTAL			
CA50	193.5		
CA60	64.3		

Vol. de concreto total (C-20) = 2.77 m³
Área de forma total = 53.64 m²

Àrea de forma total = 53.64 m²



AÇO	N	DIAM	Q	UNIT (cm)	C.TOTAL (cm)
CA60	1	5.0	80	56	4480
	2	5.0	40	66	2640
	3	5.0	10	82	820
	4	5.0	10	72	720
CA50	5	10.0	56	117	6552


Relação do Aço Pilares na Cobertura

Resumo do aço

AÇO	DIAM	C.TOTAL (m)	PESO (kg)
CA50	10,0	65,6	40,4
CA60	5,0	86,6	13,3
PESO TOTAL			
CA50	40,4		
CA60	13,3		

Vol. de concreto total (C-20) = 0.48 m³
Área de forma total = 11.74 m²

Area de forma total = 11.74 m²

 <p>AS BUILT PROJETOS</p> <p>Rua Joveno do Prado, 1564 – Boa Vista CEP: 82250-435 – Curitiba – Paraná</p>	<p>OBJETO: AMPLIAÇÃO – EDITORA</p> <p>PROJETOR: UNIVERSIDADE DOS VALES DO JEQUITINHONHA E MUCURI – UFVJM</p> <p>ENDEREÇO: RODovia, MGt 367 – Km 583, N°500, ALTO DA JACUBA – DIAMANTINA/MG</p>	
	<p>PROJETO ESTRUTURAL</p>	<p>PROJETO :</p>
<p>INTERVENÇÃO:</p> <p>FERRAGEM DOS PILARES</p>	<p>EST</p>	<p>DESENHO :</p> <p>DESIGNADO :</p> <p>DATA: 04/07/2012</p> <p>ISSUA :</p> <p>INDICADA :</p>
<p>ALUNA DO PROJETO :</p> <p>ENG. CIVIL CARLOS HENRIQUE DE S. GONÇALVES</p>	<p>DATA : 06/11/17</p>	